

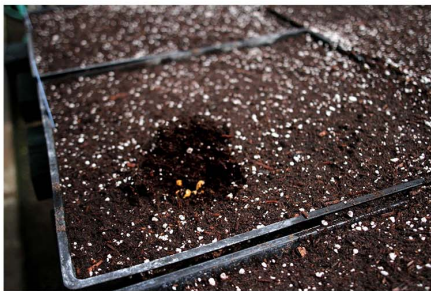


Nursery Guide

Mulholland Citrus has been producing “custom cultured citrus” trees for the past twenty years. We have gone through great lengths to insure that Mulholland Citrus trees are the best in their class. Countless hours of research have been spent developing citrus nursery methods that produce a healthy and vigorous plant for orchard development.

We take great care in maintaining an environment that is conducive to tree and root development throughout the year. The numerous greenhouses help insure that your investment is protected through the winter season while also allowing for a faster and stronger development of the tree.

Here's more about our nursery process..



Rootstock Verification

The propagation of a citrus tree starts with the seed. Mulholland Citrus takes great care in tracking the different seed varieties used for rootstock development. Rootstock verification is critical to guarantee the product ordered is the product delivered. Much of the seed used by Mulholland Citrus is direct from our seed block located at the nursery.



Cone Development

The propagation of a citrus tree starts with the seed. Mulholland Citrus takes great care in tracking the different seed varieties used for rootstock development. Rootstock verification is critical to guarantee the product ordered is the product delivered. Much of the seed used by Mulholland Citrus is direct from our seed block located at the nursery.



Budding

Once the rootstock seedlings reach maturity they are ready to transplant into soil sleeves for mature nursery tree development. Mulholland Citrus uses 11x17 inch sleeves to provide enough soil to maximize the amount of root development. This helps to insure the delivery of a strong and vigorous tree for orchard planting.

The appropriate scion variety for budding to the rootstock is chosen. received. The budding process is one of precision and detail. Experienced budders help Mulholland Citrus minimize the loss of trees due to failed buds.

After budding, the tree is monitored and maintained to insure the fastest and strongest growth pattern is reached. Irrigation, weed management and suckering all play a critical role in developing a healthy tree for orchard planting. Raising the trees in the greenhouse provides an environment which is conducive to tree development. This allows Mullholland Citrus to produce a tree at a much faster pace than many of the other citrus nurseries. It also provides added protection during the winter months when a freeze could damage the tree. That added protection can mean everything when temperatures drop in the low 20's outdoors.



Soil and Nutrition

Mulholland Citrus has spent countless hours researching and implementing the latest in soil and nutrient management. A specialized soil mix is used to provide the trees with the foundation of resources needed to develop a healthy tree. The heart of the nursery is the nutrient injection system. The injection system adds vital nutrients into each irrigation providing the tree with just the right nutrient chemistry.



Final Preparation

Prior to shipment the mature nursery trees are cut back to 27 inches to increase vigor and overall health of the tree during the transplant. Final inspection is done at this time to ensure that every tree sent to the grove meets the standards set forth by Mulholland.



Planting

Planting strategy and timing is a decision the grower must make based on the variety and environment. The options are endless but you can be sure that a tree provided by Mulholland Citrus will provide the foundation for a successful beginning to a long term investment.

Start your citrus journey with Mulholland Citrus nursery products!

Seeds

Mulholland Citrus offers various rootstock seeds for sale. The seeds are gathered directly from the seed trees located at the nursery.

Seedlings

Rootstock seedlings are available for purchase. These seedlings provide the foundation needed to bud in the scion variety of your choice.

Buds

Mulholland Citrus provides quality buds for grafting onto your existing trees. As growers and nurseryman, Mulholland Citrus understands the importance of a quality bud.

Nursery Trees

The bulk of trees Mulholland Citrus provides to its customers are in this form. An 11x17 soil bag ensures that root development is at its maximum for the age of the tree. A strong root system helps to provide a vigorous tree which adapts well to its new environment.

Full Grown Trees

Landscaping with citrus is becoming more popular as people begin to realize the usefulness and beauty that a citrus tree can add to a landscape. Because of this, Mulholland Citrus offers full grown citrus trees for transplanting.



559.626.4110
5505 South Hills Valley Road
www.mulhollandcitrus.com